

HVAC GENERAL NOTES

1. INSTALL MECHANICAL SYSTEMS IN ACCORDANCE WITH LOCAL AND STATE CODES AND MANUFACTURER'S INSTRUCTIONS.
2. CONTRACTOR SHALL OBTAIN ALL NECESSARY PERMITS AND INSPECTIONS.
3. CONTRACTOR SHALL PROVIDE A COMPLETE HVAC SYSTEM TO INCLUDE ALL LABOR, MATERIALS, TOOLS, AND EQUIPMENT FOR A COMPLETE AND FUNCTIONAL SYSTEM INCLUDING ALL NECESSARY APPURTENANCES CUSTOMARILY INCLUDES BUT NOT SPECIFICALLY SPECIFIED.
4. COORDINATE WITH OTHER TRADES AND ACTUAL EXISTING AND NEW STRUCTURAL AND ARCHITECTURAL CONDITIONS, AS WELL AS REFLECTED CEILING PLAN AND LIGHTING LAYOUT.
5. CONTRACTOR SHALL PROVIDE ONE YEAR WARRANTY ON NEW INSTALLED WORK FROM DATE OF SUBSTANTIAL COMPLETION.
6. ALL NEW SUPPLY AND RETURN DUCTWORK IN CONCEALED SPACES WITHIN THE BUILDING INSULATION ENVELOPE SHALL BE INSULATED WITH R-6 BLANKET DUCT WRAP INSULATION. STAPLE AND TAPE ALL JOINTS. DUCTWORK OUTSIDE THE BUILDING INSULATION ENVELOPE SHALL BE INSULATED WITH R-8 BLANKET DUCT WRAP INSULATION. EXPOSED SUPPLY AND RETURN DUCTWORK IN CONDITIONED SPACE REQUIRES NO INSULATION.
7. SUPPLY AND RETURN TRUNK DUCTS SHALL BE FABRICATED OF GALVANIZED STEEL OF GAUGES IN ACCORDANCE WITH SMACNA STANDARDS.
8. REFRIGERANT PIPING SHALL BE SIZED IN ACCORDANCE WITH MANUFACTURER'S RECOMMENDATIONS FOR LIQUID AND VAPOR HORIZONTALS AND RISERS. JOINTS SHALL BE MADE WITH SILVER SOLDERED JOINTS. INSULATE REFRIGERANT SUCTIONS PIPING WITH MINIMUM 3/4" THICK ARMAFLEX.
9. THERMOSTATS SHALL BE PROGRAMMABLE EQUAL TO HONEYWELL SERIES 6000.
10. MECHANICAL CONTRACTOR SHALL BALANCE AIRFLOWS TO WITHIN 5% OF WHAT IS INDICATED ON THE MECHANICAL DRAWINGS.

HVAC SPECIFICATIONS

PROVIDE SUBMITTAL DATA TO ARCHITECT/ENGINEER FOR APPROVAL PRIOR TO ORDERING EQUIPMENT.

AHU-1 / HP-1: NOMINAL 1.5 TON SPLIT HEAT PUMP WITH 5 KW AUXILIARY HEAT KIT. 600 CFM TOTAL AIRFLOW. 15 SEER, R410A REFRIGERANT. BASED ON ARMSTRONG #BC5E24 / #45HP15LE118.
INDOOR UNIT - 208 VOLT, 1 PHASE, 30 AMP MOC. PROVIDE SINGLE POINT POWER CONNECTION KIT.
OUTDOOR UNIT - 208 VOLT, 1 PHASE, 12.3 MCA, 20 MOC.

AHU-2 / HP-2: NOMINAL 3 TON SPLIT HEAT PUMP WITH 7.5 KW AUXILIARY HEAT KIT. 1200 CFM TOTAL AIRFLOW. 15 SEER, R410A REFRIGERANT. BASED ON ARMSTRONG #BC5E36 / #45HP15LE136.
INDOOR UNIT - 208 VOLT, 1 PHASE, 45 MOC. PROVIDE SINGLE POINT POWER CONNECTION KIT.
OUTDOOR UNIT - 208 VOLT, 1 PHASE, 18.6 MCA, 30 MOC.

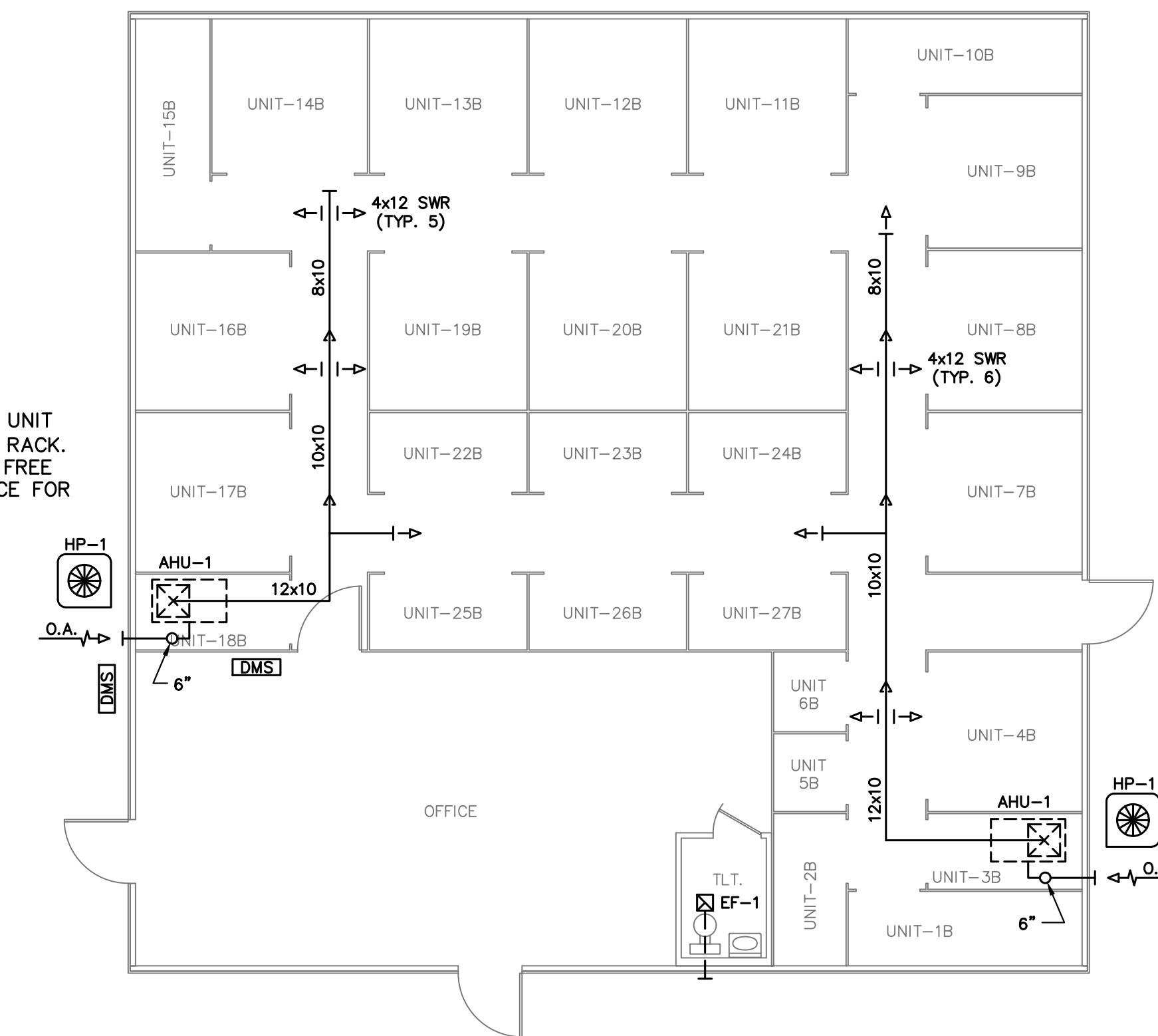
AHU-3 / HP-3: NOMINAL 2.5 TON SPLIT HEAT PUMP WITH 7.5 KW AUXILIARY HEAT KIT. 1000 CFM TOTAL AIRFLOW. 15 SEER, R410A REFRIGERANT. BASED ON ARMSTRONG #BC5E30 / #45HP15LE130.
INDOOR UNIT - 208 VOLT, 1 PHASE, 40 MOC. PROVIDE SINGLE POINT POWER CONNECTION KIT.
OUTDOOR UNIT - 208 VOLT, 1 PHASE, 17.0 MCA, 25 MOC.

EF-1: CEILING MOUNTED EXHAUST FAN EQUAL TO GREENHECK SP8-80. 70 CFM @ 0.10 in. S.P. 120 VOLT, 1.14 AMPS. SWITCHED WITH LIGHTS. ROUTE DUCT TO WALL CAP.

SWG: SIDEWALL SUPPLY REGISTER WITH ADJUSTABLE FACE VANES AND BALANCING DAMPER EQUAL TO HART & COOLEY #VM1001.

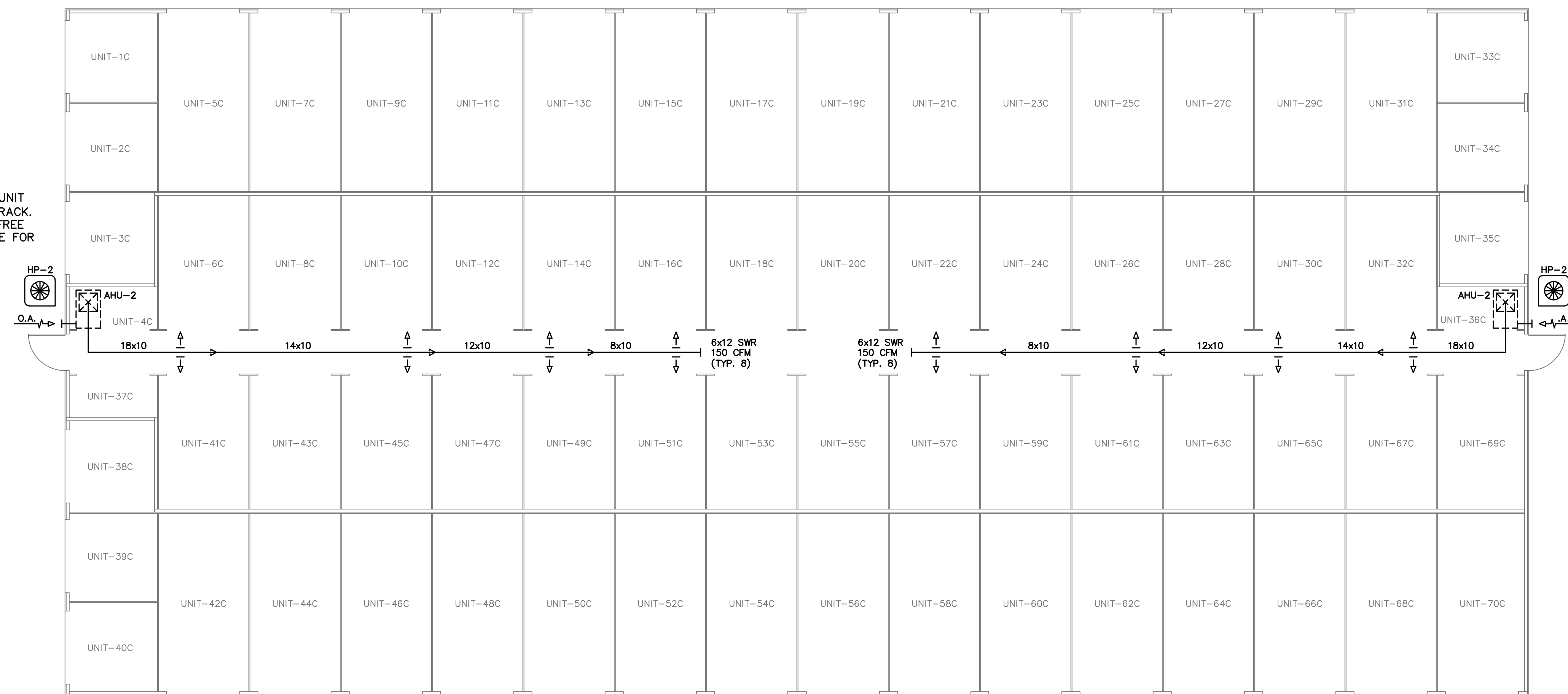
DMS: NOMINAL 12000 BTUH TON DUCTLESS MINI-SPLIT HEAT PUMP. 22 SEER, R410A REFRIGERANT. INDOOR WALL HUNG AIR HANDLING UNIT. BASED ON LG #LSN120H5V / #LSU12H5V. ROUTE CONDENSATE DRAIN TO BUILDING EXTERIOR UNLESS NOTED OTHERWISE.
INDOOR UNITS - FED FROM THE OUTDOOR UNIT THROUGH POWER/COMMUNICATION WIRE.
OUTDOOR UNIT - 208 VOLT, 1 PHASE, 13.3 MCA, 20 MOC.

MOUNT AIR HANDLING UNIT ON STAND W/ FILTER RACK. MECH. CLO. TO HAVE FREE AIRFLOW TO THE SPACE FOR RETURN AIR, TYP.



1 BLDG. B - HVAC PLAN
M1.1 SCALE: 1/8" = 1'-0"

MOUNT AIR HANDLING UNIT ON STAND W/ FILTER RACK. MECH. CLO. TO HAVE FREE AIRFLOW TO THE SPACE FOR RETURN AIR, TYP.



2 BLDG. C - HVAC PLAN
M1.1 SCALE: 1/8" = 1'-0"

KNAUSS ENGINEERING & DESIGN, LLC
703 Nance Ferry Rd.
Blaine, TN 37709
865-740-3361

STORAGE FACILITY
DEVELOPMENT
305 WEST ECONOMY ROAD
MORRISTOWN, TN. 37814
MR. BARAK ZUKERMAN
23025



R. LEN JOHNSON & ASSOCIATES
Architects, Construction Analysts & Inspectors
J & A
724 TAYLOR ROAD, KNOXVILLE, TN 37920 (VOL.) 573-1148

Drawing Description...
BLDG. B & C
HVAC PLANS

REVISIONS	
No.	Date

Plot Scale 1/8" = 1'-0"
Dwn. DST
Appd. GK
Project No. X
Date X
Sh. No. X
of X
M1.1
of X