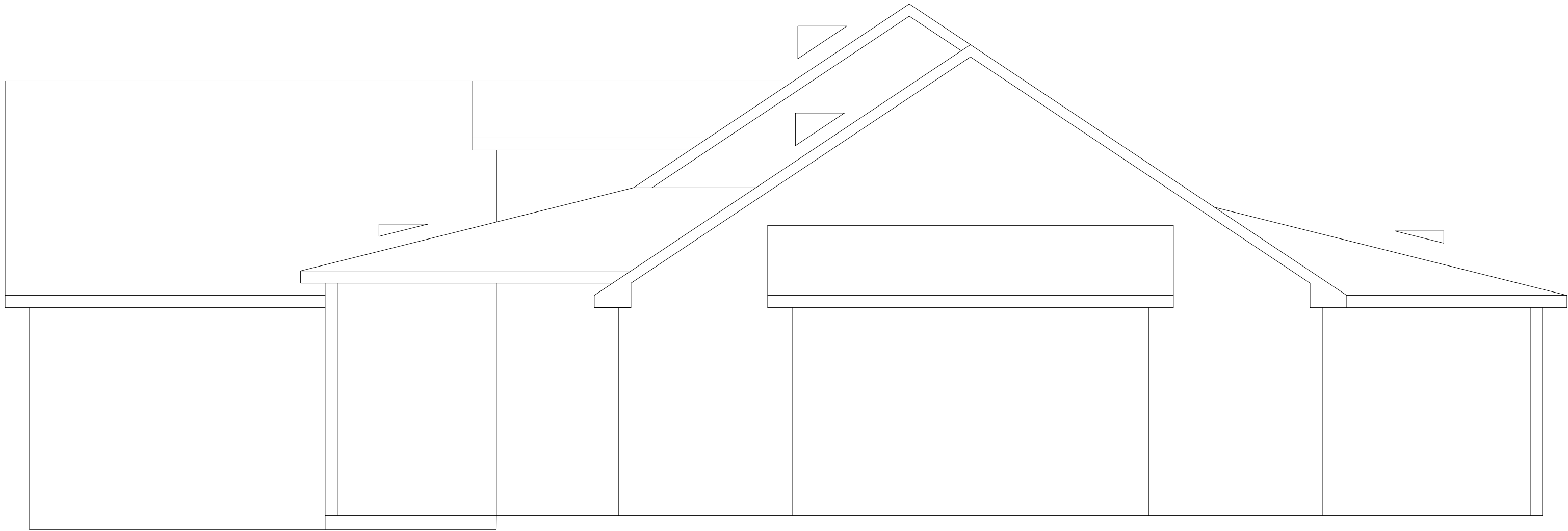


A B C D E F G H I J K L M N O P Q R S T U V W

1  
2  
3  
4  
5  
6  
7  
8  
9  
10  
11  
12  
13  
14  
15



- Builder / Contractor must verify all dimensions prior to construction.
- Builder / Contractor is responsible for compliance with all local building code and ordinance.
- All dimensions are to face of stud unless otherwise mentioned
- All dimensions should be read or calculated and not depend on scale
- Slope all Concrete, drives porches  $\frac{1}{4}$ " per foot away from house and foundation.
- All footers must be below frost Line and on undisturbed dirt. Not on top Soil.
- All Material must be of good grade and structural sound materials and to local codes.
- All exterior walls to be covered with  $\frac{1}{2}$ " OSB and wrapped and taped
- Sill Plate must be Pressure treated with termite shield and insulated
- 1/2" Anchor bolts every 4' OC on top sill
- #4 Rebar vertical every 3' and poured solid cells
- All wood in contact with concrete or masonry must be Pressure treated lumber with a vapor barrier insulator



SCALE

SECOND FLOOR JOIST

ADDRESS:

REV

ERIC HOUSE

ELITE ONE BUILDERS

PAGE

A1.5